



**Architecture  
Engineering &  
Consulting**



# **ENHANCING OUR FEDERAL & LOCAL COMMUNITIES**

Larson Design Group: A guide to success.



# Larson Design Group

## Capabilities Overview

Larson Design Group (LDG) offers a wide variety of planning and programming services with unique expertise in Federal-specific master planning and programming. We work with communities, municipalities, government agencies, and more to provide creative, compliant, and economical solutions to our clients.

LDG's planners, architects, landscape architects, environmental specialists, engineers, and designers support everything from conceptual sketches to full master plans and design guidelines.

## PLANNING SERVICES

- Military Master Planning
- Programming Studies
- Space Planning & Facility Utilization Studies
- Parks & Recreation Planning
- Landscape Architecture

## MULTI-DISCIPLINE SERVICES

- Concept & Full Designs
- Facility Condition Assessments
- Infrastructure Planning
- Transportation Planning



Comprehensive Planning Services





“I have worked with LDG on several Area Development Plans, Transportation Management Plans, and Infrastructure Studies. Each time the LDG team were consummate professionals while routinely exceeding all of the SOW requirements while providing the highest quality products. In addition, LDG has routinely met all of the scheduled milestones and successfully executed all of the tasks according to the schedule established within the PMP. LDG has truly been a phenomenal team player and an asset to the project.”

TERRENCE HARRINGTON  
USACE, BALTIMORE DISTRICT





# Military Master Planning

Whether it's a full military installation, district, campus, or other project, Larson Design Group's certified planners, architects, landscape architects, environmental specialists, engineers, and designers all collaborate to inspire distinct and vibrant destinations with everything from conceptual sketches to full master plans and design guidelines.

We engage clients, stakeholders, and communities in a planning process to create a vision for the future. Our team possesses a seasoned knowledge of the primary criteria that drive today's military master planning requirements.

Bomber Campus Plan | Tinker AFB, OK





The military veterans on our team also bring added value through their experience and perspective as previous clients. Our Director of Planning & GIS, Wes Baker is a former U.S. Army officer, certified cost estimator, and senior military master planner. He gained valuable programming and government contracting experience while serving as a MLCON and master planning program manager for USARCENT.

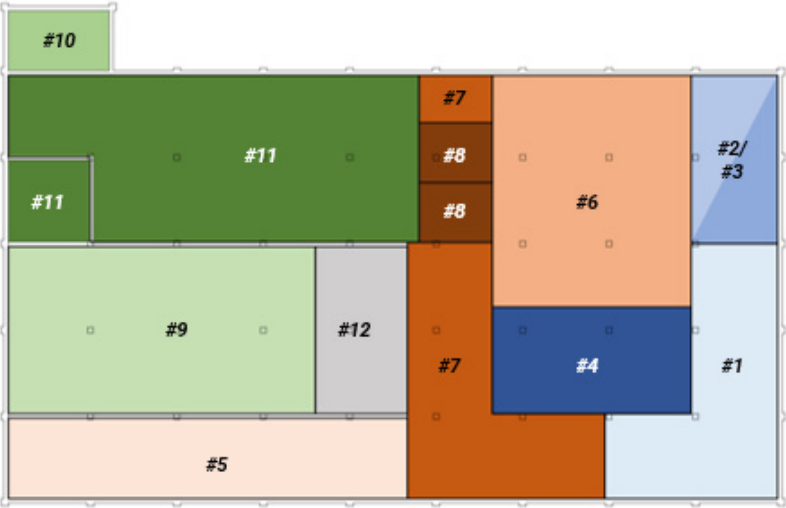
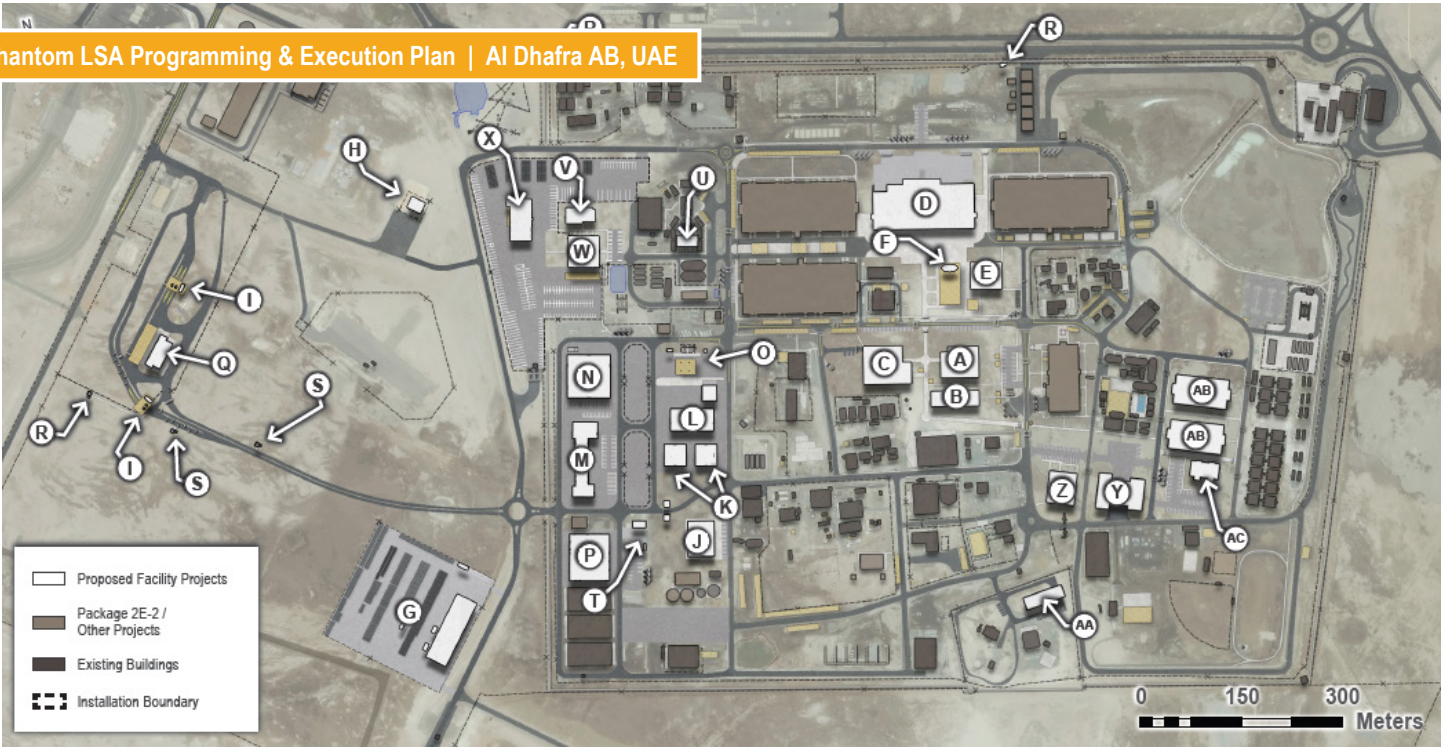




# Programming Studies

Our team has led charrettes around the world to work with stakeholders, identify their requirements, and develop the applicable program. Additionally, our team is experienced in validating these requirements against the applicable regulation to ensure they match federal standards and regulations. LDG’s planners also work hand-in-hand with our architects and engineers to provide technical support at the programming-level. We do this to ensure new sites and facilities are correctly programmed for future design efforts and funding requests. Additionally, our team is well versed in developing conceptual or rough order of magnitude cost estimates.

Phantom LSA Programming & Execution Plan | Al Dhafra AB, UAE





DD Form 1391 Preparation

Parametric Cost Estimating

Space Planning  
& Programming

Site & Facility Concept  
Development

Planning Charrette Reports

## PLANNING CHARRETTE REPORTS & DD FORM 1391s:

### Multi-Facility & Campus/District-Wide Programs:

- Al Dhafra AB – Life Support Area
- Fort Stewart – Railhead
- Will Rogers Air National Guard Base – OA-1K Bed-down & MSA
- Tinker AFB – B-21/Bomber Campus

### Operations & Administrative Facility Projects:

- Fort Shafter – Pineapple Pentagon
- Kadena AB – PAX Terminal
- Tinker AFB – SWEG (Multi-Story SCIF/Data Center Renovation)
- Tinker AFB – B9001 Mezz1
- Schofield Barracks – Lyman Gate
- Western Federal Lands – HQ Renovation & Feasibility Study
- Yokota AB – Command Operations

### Maintenance Facility Projects:

- Tinker AFB – B3001 Roof Repair
- Yokota AB – Fleet Services Terminal

### Barracks & Dormitories Projects:

- Fort Stewart – UEPH
- Joint Base Anacostia-Bolling – Dorm Renovation
- Kwajalein Atoll – Lodging & Barracks Renovation
- Camp Zama – Military Family Housing Renovation





# Infrastructure Planning

Water Pressure Testing | Fort Shafter, HI



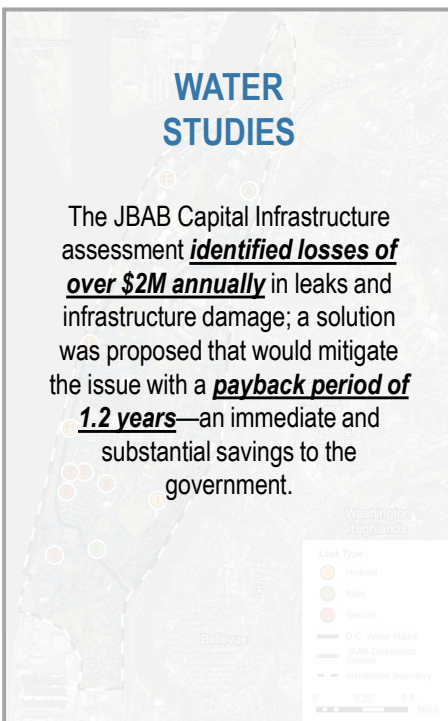
Infrastructure planning and engineering is a core strength at LDG, and we understand that the success of a project can hinge on the utilities design. Using our in-house planning and engineering services, LDG researches and analyzes each site to determine the particular project needs, develop plans that minimize the site preparation costs, and maximize the site's value. From site design to stormwater management, utility capacity and requirements, and occupancy considerations, LDG's expert staff of planners and engineers have spent their entire careers honing the skills necessary to successfully complete infrastructure projects of all types and sizes.

## Infrastructure Capacity Analyses & Technical Studies:

- Fort Shafter (Water)
- Helemano Military Reservation (Water)
- Torii Station (Water & Power)
- Joint Base Anacostia-Bolling (Water)
- Joint Base San Antonio (Water & Sanitary Sewer)
- Cold Region Research & Engineering Lab (Power)

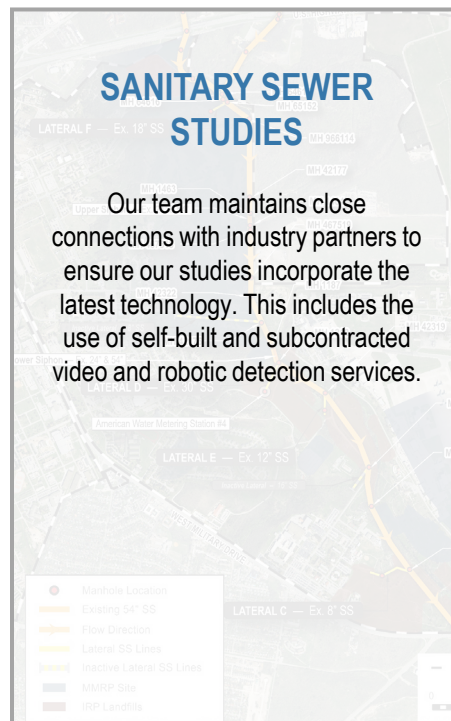
## WATER STUDIES

The JBAB Capital Infrastructure assessment **identified losses of over \$2M annually** in leaks and infrastructure damage; a solution was proposed that would mitigate the issue with a **payback period of 1.2 years**—an immediate and substantial savings to the government.



## SANITARY SEWER STUDIES

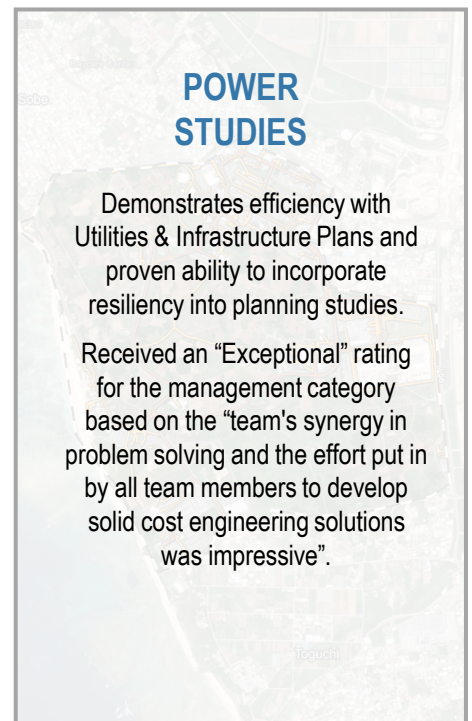
Our team maintains close connections with industry partners to ensure our studies incorporate the latest technology. This includes the use of self-built and subcontracted video and robotic detection services.



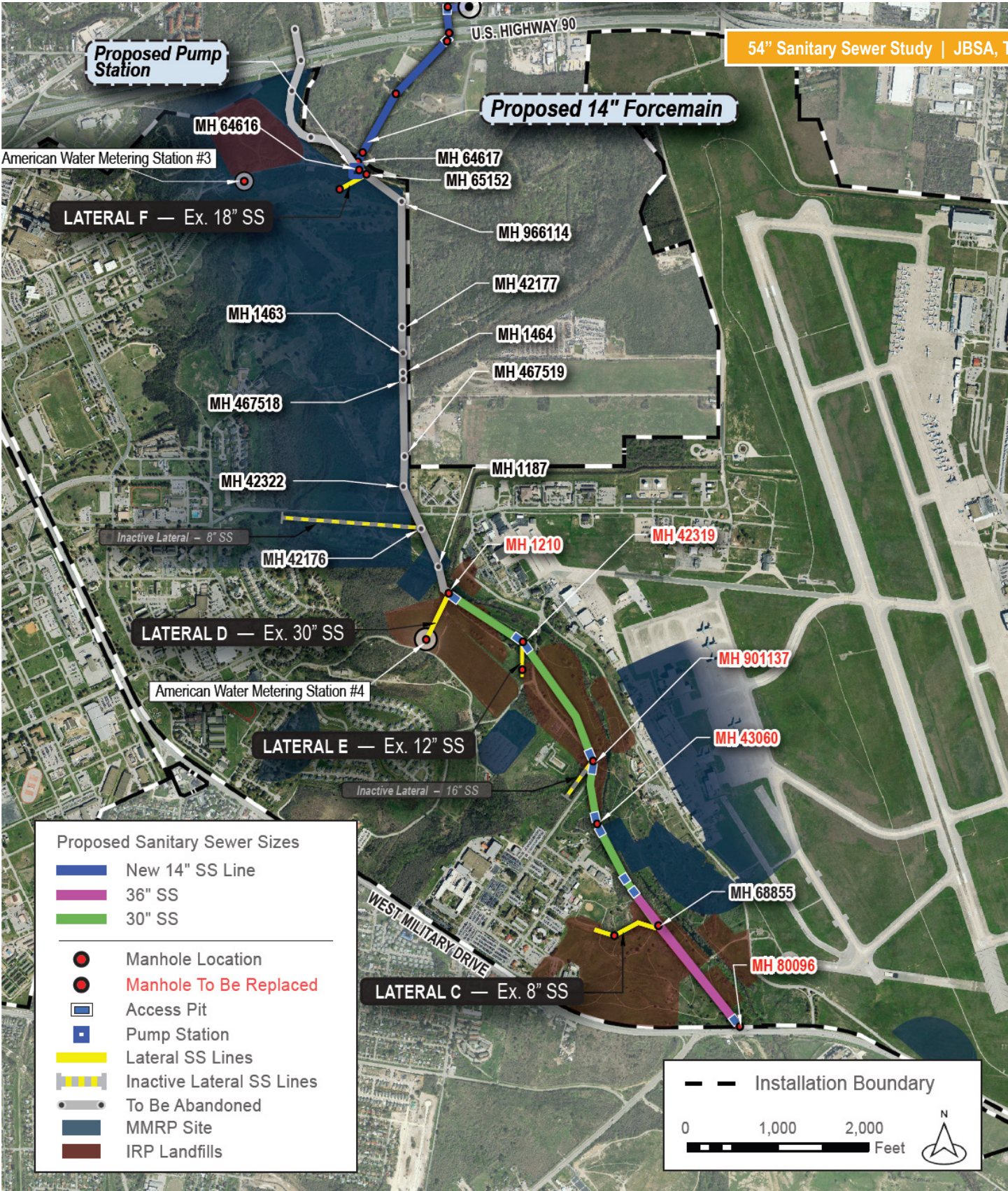
## POWER STUDIES

Demonstrates efficiency with Utilities & Infrastructure Plans and proven ability to incorporate resiliency into planning studies.

Received an "Exceptional" rating for the management category based on the "team's synergy in problem solving and the effort put in by all team members to develop solid cost engineering solutions was impressive".









# Transportation Planning

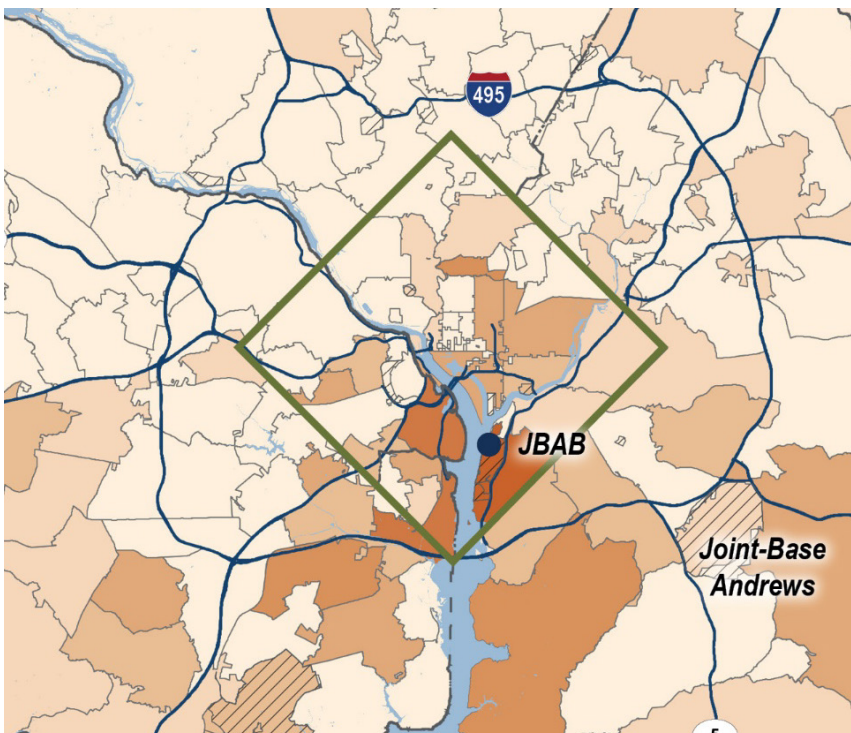
LDG's planning team has developed a vast array of supporting transportation planning projects across the country. Our planners work with technical subject matter experts to bridge data-driven analysis with stakeholder requirements. This includes using traffic counts, public surveys, interviews, GIS analysis and mapping, along with collaborative workshops to develop implementable solutions to improve transportation networks.

## Transportation Management Plans:

- Joint Base Anacostia-Bolling
- Seymour Johnson AFB
- Ellsworth AFB
- Tinker AFB
- Dover AFB
- Nellis AFB
- Joint Base Langley-Eustis
- Lackland AFB
- Camp Bullis
- Fort Sam Houston
- Randolph AFB
- Kirtland AFB
- Joint Base Charleston

## Recent Projects:

- Fort Hood – Traffic Safety Study
- Schofield Barracks – ECP Concept Design & Programming
- Wheeler Army Airfield – Route Study
- Honouliuli NHS – Transportation Access Study





## Gate Studies

## Transportation Demand Management

## Sign Management Studies

## Route Studies

## Traffic Engineering

Despite conducting 13 different Transportation Management Plans in the last 4 years alone, our team does not produce boilerplate reports. We recognize that each installation is in different in its mission, geography, and population.

**Our team prides itself on tailoring our recommendations to those that are realistic to the needs, schedule, and budget of the installation.**

We focus on making recommendations that have specific actions, prepare concepts to bridge into programming, and can produce measurable results.





# Parks & Recreation Planning

Community planning and landscape architecture strengthen communities, promote business growth, improve the quality of life for residents, and provide a balanced and enjoyable outdoor space for future generations. We help our clients determine their needs, connect with funding sources, control costs, and stay on schedule. Over the past 30 years, we have completed multiple trail, park, and recreation projects that have provided us with a wealth of experience, including the ability to develop a complete, well-designed, and technically sound park system.

## Park & Trail Projects:

- Liberty Trail – Fort Liberty, NC
- Sunset March Trail & Plaza – Fort Liberty, NC
- Catawissa, PA – State Park Master Plan
- Lake Thunderbird, OK – State Park Master Plan
- Tozer's Twp., PA – Community Park Plan



Bicycle & Pedestrian Trail Plans

Athletic Facility Design

Parks & Recreation Plans

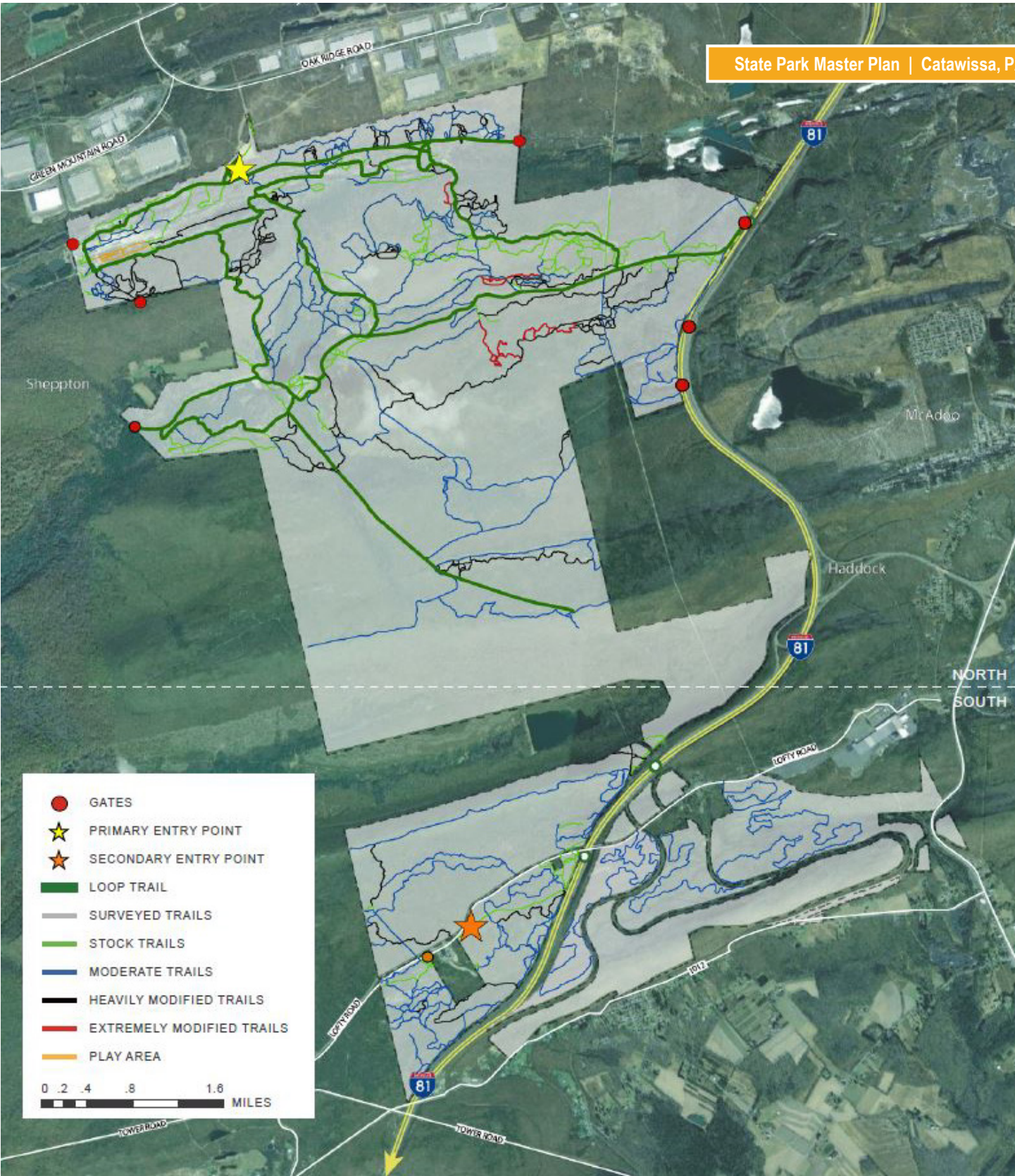
Wayfinding & Signage

Business Case Development

## Community Park Plan | Tozer's Landing, PA











**Architecture  
Engineering &  
Consulting**

**Point of Contact:**

**Wes Baker**

Associate Vice President | Director of Planning & GIS

724.554.4518

[wbaker@larsondesigngroup.com](mailto:wbaker@larsondesigngroup.com)