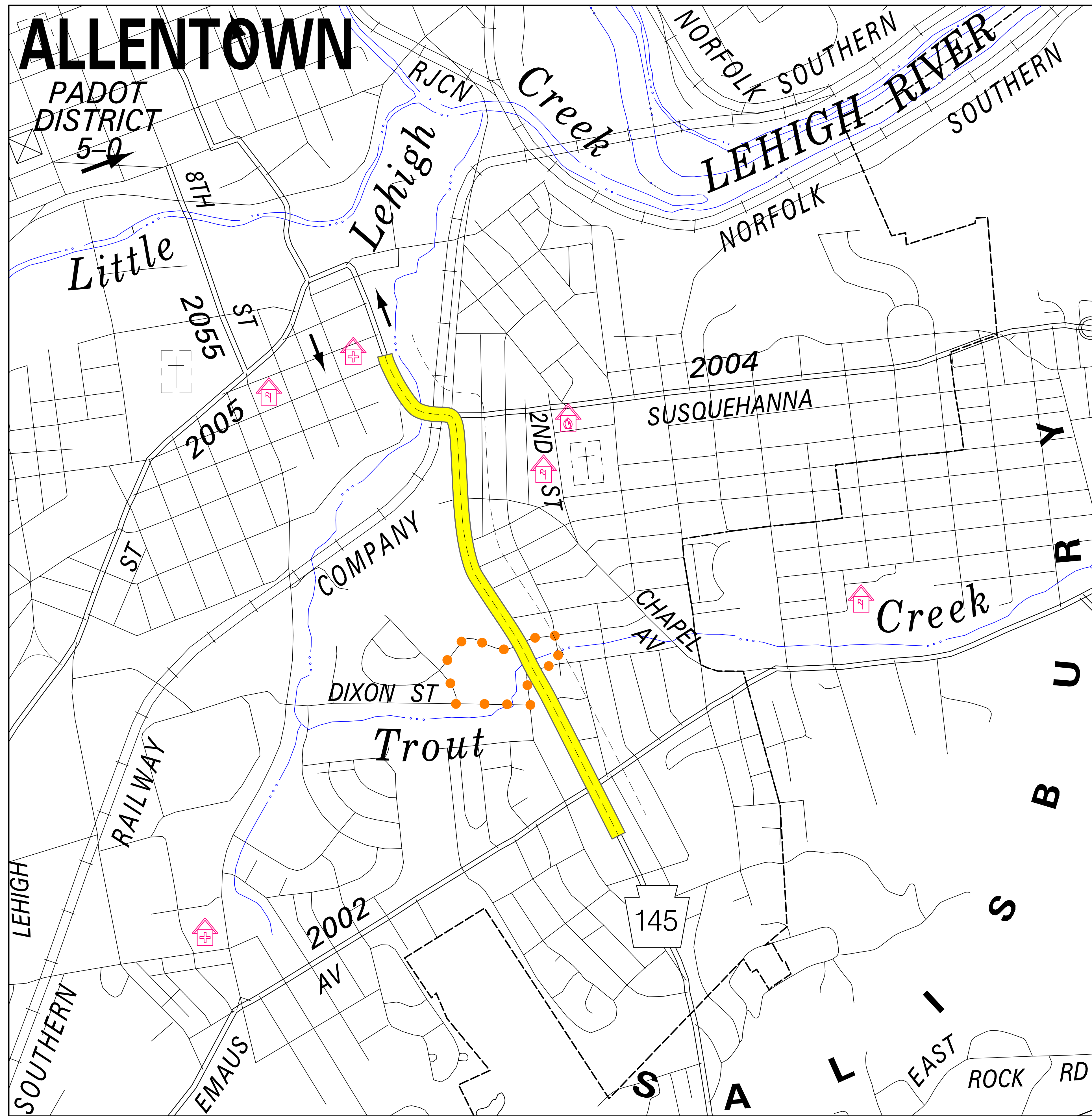


ALLENTOWN



SR 0145-13S SAFETY IMPROVEMENT PROJECT PUBLIC PLANS DISPLAY



PRELIMINARY PLANS AND PROJECT DESCRIPTION

THE PENNSYLVANIA DEPARTMENT OF TRANSPORTATION IS IN THE DESIGN PHASE FOR SAFETY IMPROVEMENTS TO STATE ROUTE 0145 SECTION 13S LOCATED IN THE CITY OF ALLENTOWN, LEHIGH COUNTY. THE PROJECT BEGINS JUST SOUTH OF THE W. EMAUS AVENUE AND EXTENDS APPROXIMATELY 1.3 MILES NORTH ALONG SR 0145 TO W. WYOMING STREET. THE PROJECT INCLUDES TRAFFIC SIGNAL UPGRADES, ADDITION OF A CENTER TURN LANE, ROADWAY MILL AND OVERLAY, WIDENING FOR RIGHT TURN LANES AND RADIUS IMPROVEMENTS, CONSTRUCTION OF A RETAINING WALL, AND STORMWATER IMPROVEMENTS.

THE PROJECT WILL BE CONSTRUCTED UTILIZING LONG-TERM STAGED CONSTRUCTION TO MAINTAIN TWO LANES OF TRAFFIC AT ALL TIMES. TWO LOCAL ROAD DETOURS & PEDESTRIAN DETOURS WILL BE INCORPORATED.

THE START OF CONSTRUCTION IS ANTICIPATED TO BEGIN IN THE SPRING OF 2023 AND WILL TAKE APPROXIMATELY 18 MONTHS TO COMPLETE.

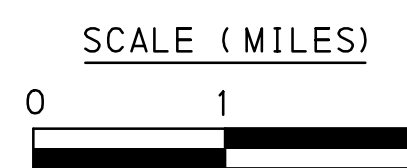
IF YOU HAVE ANY QUESTIONS ABOUT THE PROJECT, PLEASE CONTACT:

MEGAN FALLON
PENNDOT PROJECT MANAGER,
610-650-8101 OR C-MFALLON@PA.GOV

OR
JASON HURSH - ENGINEERING PROJECT MANAGER
JHURSH@LARSONDESIGNGROUP.COM

LEGEND

- PROJECT
- STATE ROUTE
- 2002** STATE ROUTE NUMBER
- MUNICIPAL ROAD
- LOCAL DETOUR
- ALLENTOWN SCHOOL DISTRICT SCHOOLS
- EMERGENCY SERVICES
- FIRE STATION



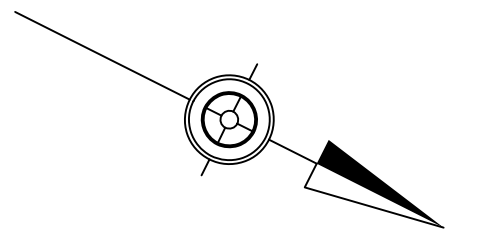
SR 0145-13S
SAFETY IMPROVEMENT
PROJECT

LEHIGH COUNTY
CITY OF ALLENTOWN

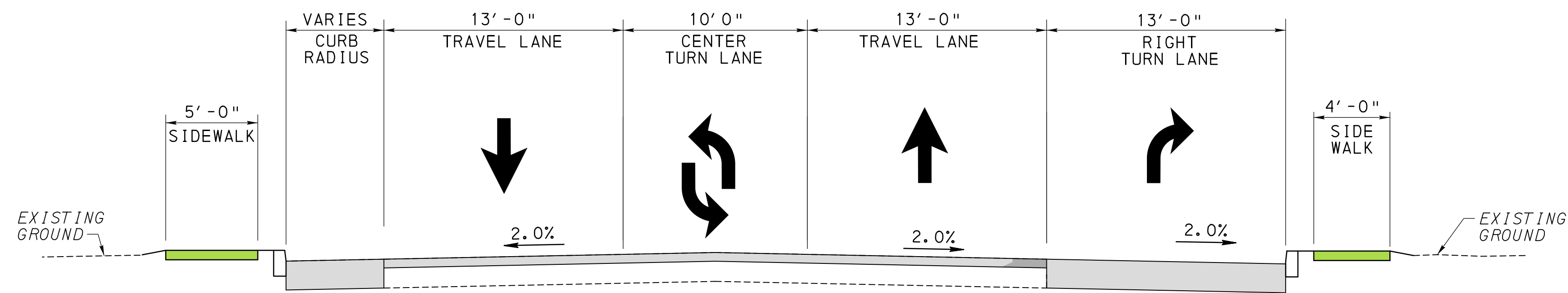
JANUARY 2021

DATE: 1/28/2021 10:00 AM
 FILE: D:\GIS\Projects\SR0145-13S\Drawings\Public\SR0145-13S_PUB1.dgn
 USER: JHURSH
 MODEL: D:\GIS\Projects\SR0145-13S\Drawings\Public\SR0145-13S_PUB1.dgn
 PLOT DRIVER: c:\windows\system32\cmd.exe /c gimp -b -x -d "C:\Program Files\GIMP 2\bin" -i
 PEN TABLE: PEN.tbl

SR 0145-13S PUBLIC PLANS DISPLAY



SR 0145 (LOOKING NORTH)

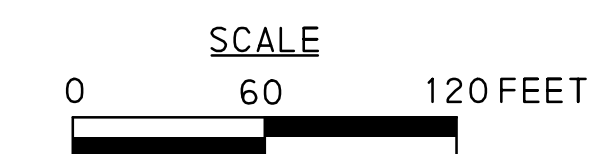


SR 0145 (S 4TH ST)

PRELIMINARY PLANS DISPLAY 2 OF 5

LEGEND

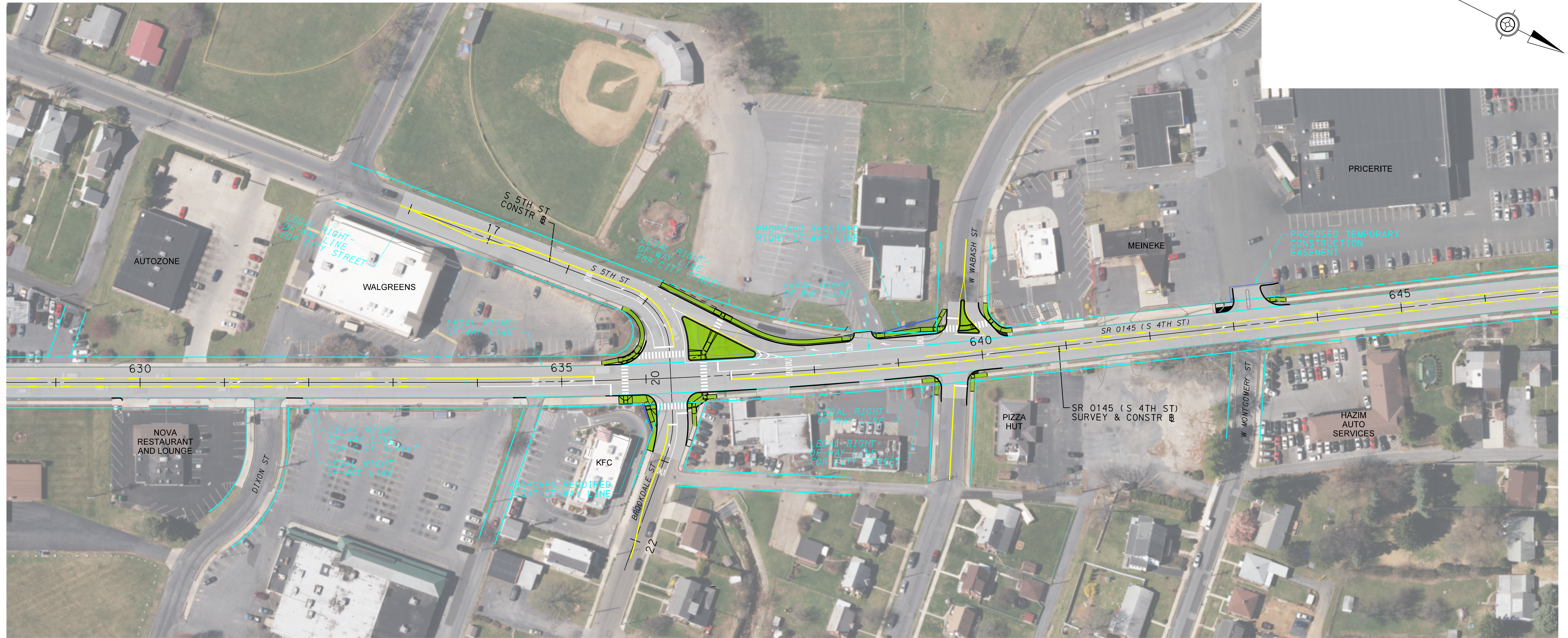
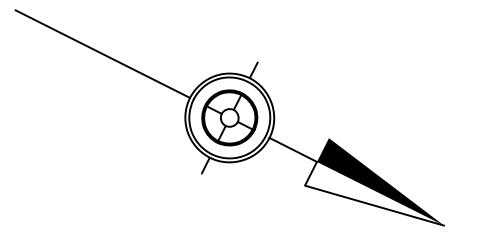
- PROPOSED ROADWAY PAVEMENT
- PROPOSED SIDEWALK
- PROPOSED WALL



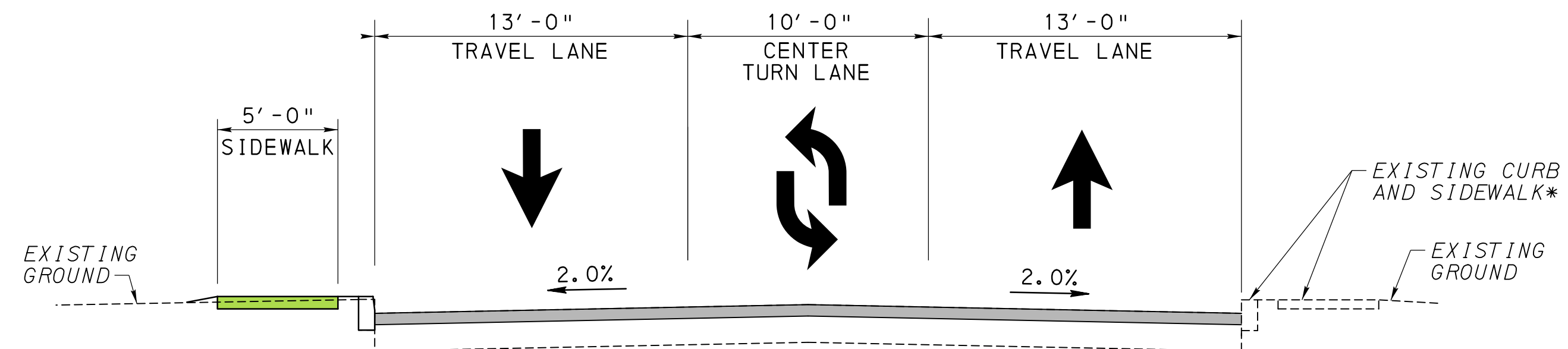
SR 0145-13S SAFETY IMPROVEMENT PROJECT
LEHIGH COUNTY CITY OF ALLENTOWN
JANUARY 2021

DATE: 1/28/2021
 TIME: 11:00 AM
 USER: jhursh
 MODEL: D:\cadd\sr0145-13s\sr0145-13s.dwg
 PLOT DRIVER: c:\windows\system32\cmd.exe
 PEN TABLE: PEN.tbl

SR 0145-13S PUBLIC PLANS DISPLAY



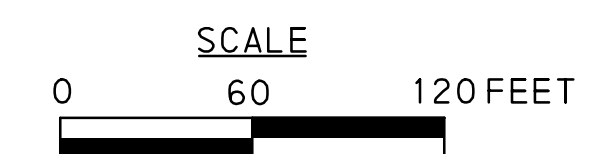
SR 0145 (LOOKING NORTH)



SR 0145 (S 4TH ST) PRELIMINARY PLANS DISPLAY 3 OF 5

LEGEND

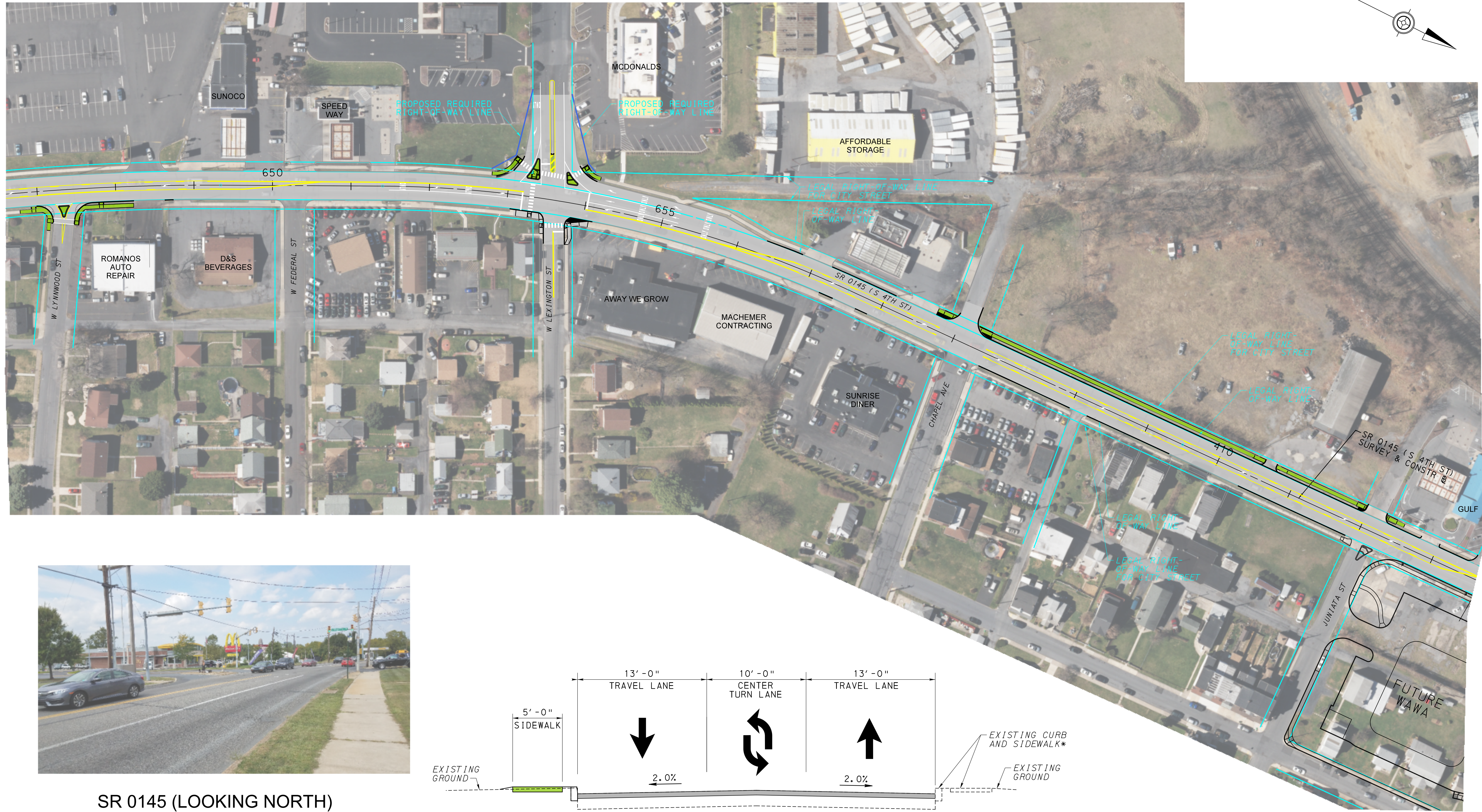
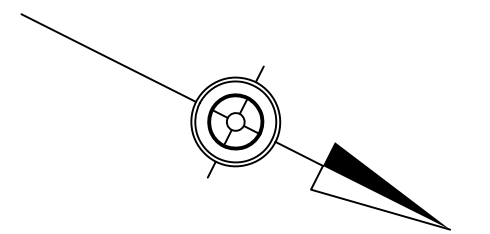
- PROPOSED ROADWAY PAVEMENT
- PROPOSED SIDEWALK
- PROPOSED WALL



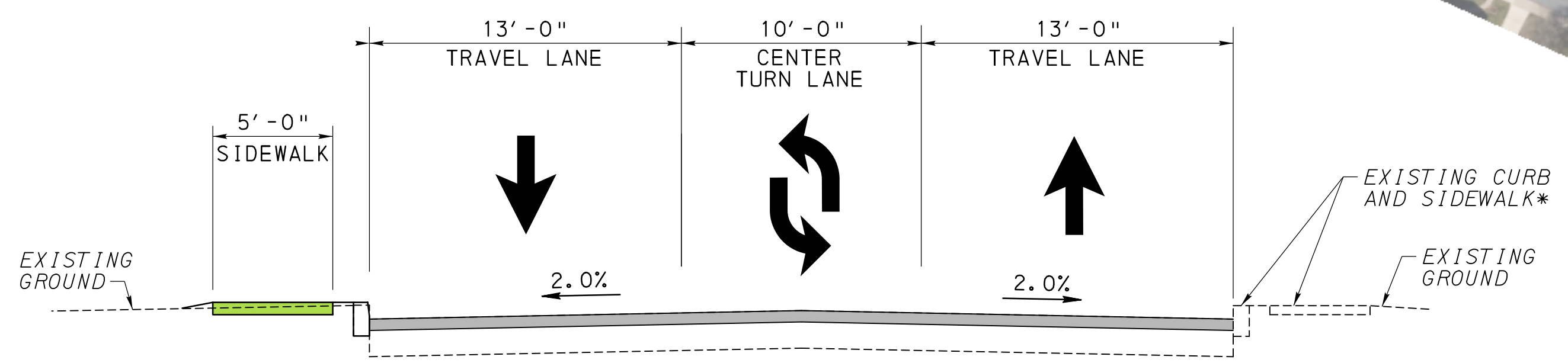
SR 0145-13S SAFETY IMPROVEMENT PROJECT
LEHIGH COUNTY CITY OF ALLENTOWN
JANUARY 2021

DATE: 1/28/2021 10:51:15 AM
 FILE: P:\Projects\106\CAD\02_Highway\Pub\ic_involvement\Plans\5223-106_PUBL\cpc002.dgn
 USER: jhursh
 MODEL: DeFault
 PLOT DRIVER: c:\adms\workdir\hursh\dms00515\pdf-color\RES-AERIAL.plt
 PEN TABLE: PEN.tbl

SR 0145-13S PUBLIC PLANS DISPLAY



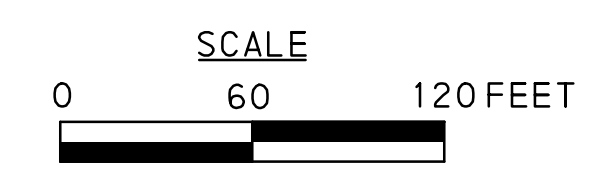
SR 0145 (LOOKING NORTH)



SR 0145 (S 4TH ST)

PRELIMINARY PLANS DISPLAY 4 OF 5

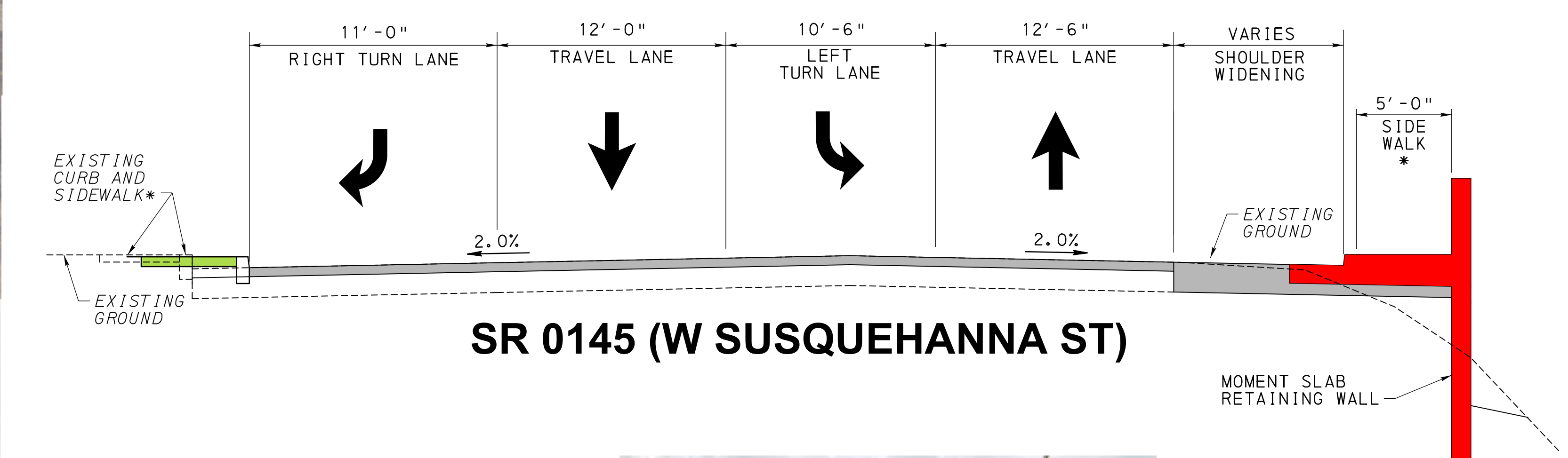
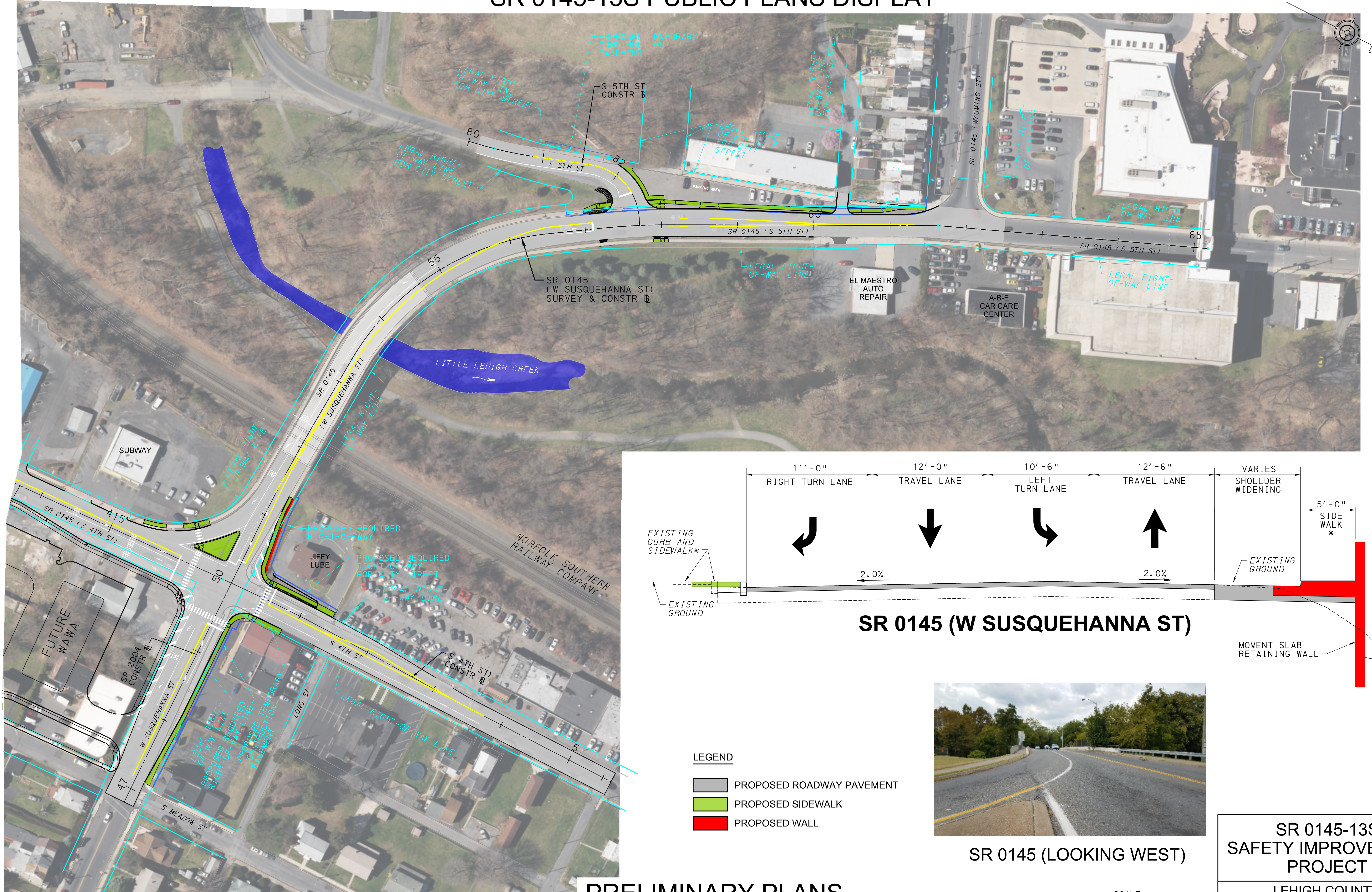
- LEGEND**
- PROPOSED ROADWAY PAVEMENT
 - PROPOSED SIDEWALK
 - PROPOSED WALL



SR 0145-13S SAFETY IMPROVEMENT PROJECT
LEHIGH COUNTY CITY OF ALLENTOWN
JANUARY 2021

DATE: 1/21/2021
 TIME: 10:44 AM
 FILE: E:\p\11\log-pw-01\Documents\Proj\sect\5223-106\CAD\02_Highway\Public_Involvement_Plans\5223-106_PUBL\cpc003
 USER: jhursh
 MODEL: DeFault
 PLOT DRIVER: c:\adms\workdir\hursh\dms00515\pdf-co\orL0-RES-AERIAL.p1ctcf
 PEN TABLE: PENIBL

SR 0145-13S PUBLIC PLANS DISPLAY

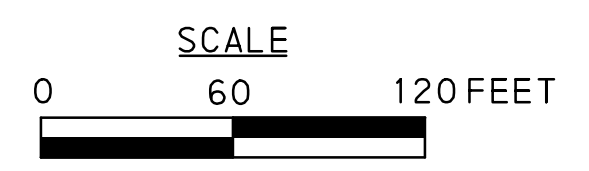


SR 0145 (W SUSQUEHANNA ST)

- LEGEND**
- PROPOSED ROADWAY PAVEMENT
 - PROPOSED SIDEWALK
 - PROPOSED WALL



SR 0145 (LOOKING WEST)



**PRELIMINARY PLANS
DISPLAY 5 OF 5**

**SR 0145-13S
SAFETY IMPROVEMENT
PROJECT**

LEHIGH COUNTY
CITY OF ALLENTOWN

JANUARY 2021

DATE: 1/28/2021 10:59:39 AM
 FILE: P:\13S\13S_Plan\13S_Plan\13S_Plan.dwg
 USER: jhursh
 MODEL: 13S_Plan.dwg
 PLOT DRIVER: c:\windows\system32\cmd.exe /c call c:\program files\autodesk\lisp\plot.plt
 PEN TABLE: PEN.tbl